

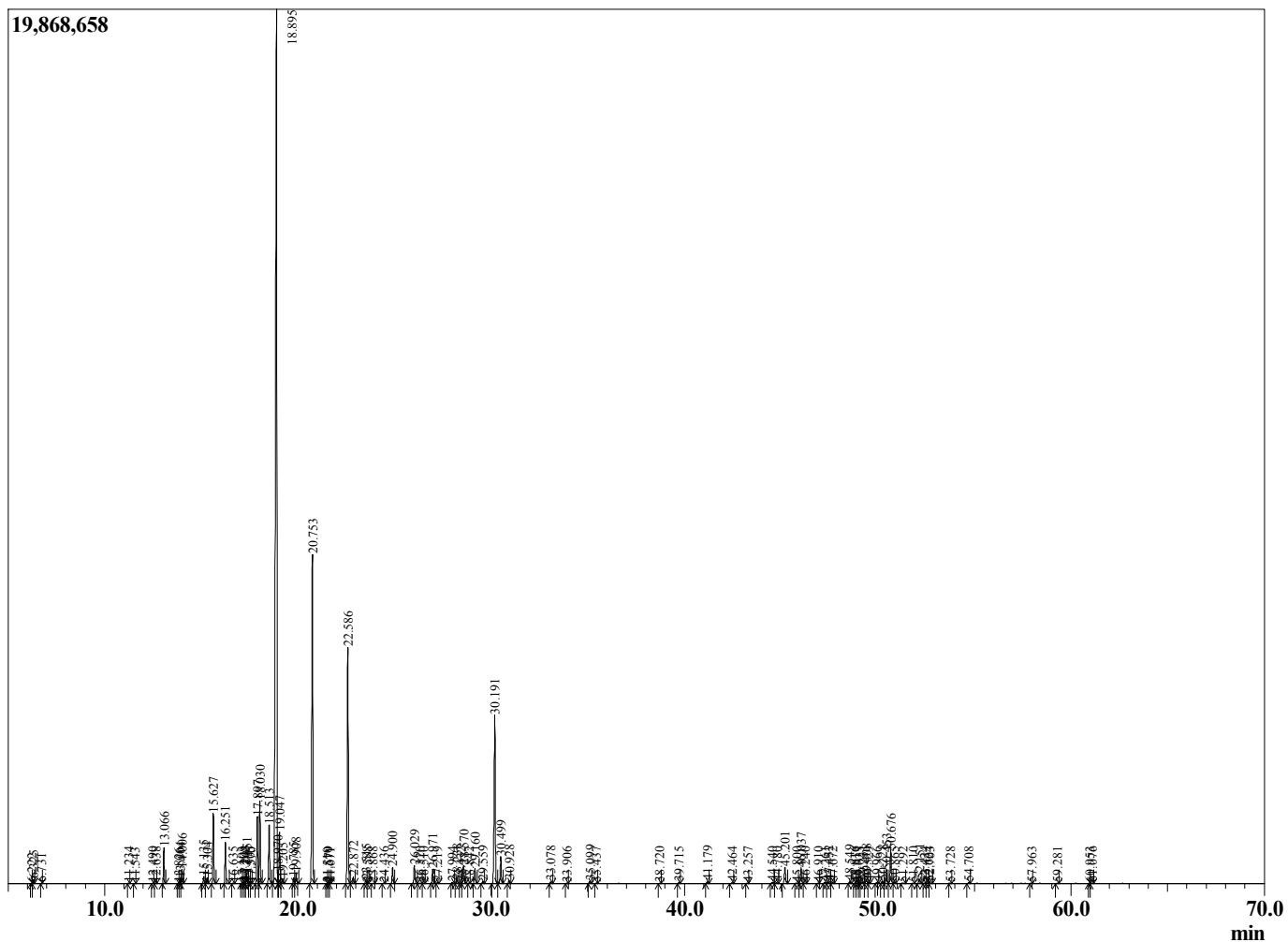
Sample Information

Sample Type : Essential Oil
 Sample Name : Citrus aurantifolia

Lime Distilled
 Lot# MEK20-KT
 Country: Mexico



Chromatogram Citrus aurantifolia



R.Time	Name	Area%
6.222	Limediene isomer	0.02
6.325	Limediene	0.11
6.731	Limediene isomer	0.01
11.234	Nonane	0.02
11.543	Bornylene	0.01
12.490	Tricyclene	0.02
12.638	alpha-Thujene	0.02
13.066	alpha-Pinene	1.09
13.826	Unidentified	0.01
13.904	alpha-Fenchene	0.17
14.006	Camphene	0.46
15.135	Bois de Rose oxide	0.26
15.304	Sabinene	0.21
15.627	beta-Pinene	2.30
16.251	Myrcene	1.39
16.635	2-Carene	0.03
17.103	Octanal	0.03
17.208	Pseudolimonene	0.04
17.263	Unidentified	0.06
17.351	alpha-Phellandrene	0.37
17.505	delta-3-Carene	0.02
17.570	Sabinene	0.01
17.897	1,4-Cineole	2.42
18.030	alpha-Terpinene	2.89
18.513	para-Cymene	2.21
18.895	Limonene	43.70
18.970	beta-Phellandrene	0.26
19.047	1,8-Cineole	1.67
19.205	cis-beta-Ocimene	0.17
19.785	2,2-Dimethyl-, 5-(1-methyl-1-propenyl)-tetral	0.21
19.908	trans-beta-Ocimene	0.41
20.753	gamma-Terpinene	12.46
21.510	Octanal	0.01
21.579	Unidentified	0.02
21.671	Pinol	0.01
22.586	Terpinolene	8.77
22.872	para-Cymenene	0.25
23.515	Linalool	0.15
23.588	Undecane	0.02
23.868	Nonanal	0.02
24.436	Unidentified	0.04
24.900	alpha-Fenchol	0.63
26.029	Terpin-3-en-1-ol	0.75
26.320	Unidentified	0.04
26.510	Unidentified	0.02
26.971	trans-beta-Terpineol	0.55
27.219	Unidentified	0.04
27.994	Isoborneol	0.07
28.238	Unidentified	0.16
28.432	delta-Terpineol	0.04
28.570	Borneol	0.74
28.842	Unidentified	0.03
29.160	Terpinen-4-ol	0.59
29.559	para-Cymen-8-ol	0.07
30.191	alpha-Terpineol	7.29
30.499	gamma-Terpineol	1.04

R.Time	Name	Area%
30.928	Decanal	0.12
33.078	Neral	0.07
33.906	Geraniol	0.02
35.099	Geranial	0.10
35.437	Decanol	0.02
38.720	Unidentified	0.02
39.715	delta-Elemene	0.04
41.179	Neryl acetate	0.07
42.464	Geranyl acetate	0.06
43.257	beta-Elemene	0.04
44.540	Dodecanal	0.06
44.780	cis-alpha-Bergamotene	0.05
45.201	beta-Caryophyllene	0.73
45.800	gamma-Elemene	0.02
46.037	trans-alpha-Bergamotene	0.65
46.240	Unidentified	0.03
46.910	Unidentified	0.01
47.261	trans-beta-Farnesene	0.06
47.452	alpha-Humulene	0.07
47.672	beta-Santalene	0.04
48.549	Unidentified	0.09
48.816	Unidentified	0.03
48.917	alpha-Amorphene	0.02
49.025	Germacrene D	0.01
49.231	Unidentified	0.08
49.408	delta-Selinene	0.20
49.529	beta-Selinene	0.04
49.966	alpha-Selinene	0.06
50.228	cis-alpha-Bisabolene	0.09
50.453	(E,E)-alpha-Farnesene	0.60
50.676	beta-Bisabolene	1.49
50.865	Unidentified	0.07
51.292	delta-Cadinene	0.04
51.810	trans-gamma-Bisabolene	0.01
52.151	alpha-Maaline	0.18
52.424	Eremophilene isomer	0.03
52.624	Unidentified	0.05
52.703	Selina-3,7(11)-diene	0.05
53.728	Germacrene B	0.03
54.708	Caryophyllene alcohol	0.05
57.963	gamma-Eudesmol	0.03
59.281	alpha-Cadinol	0.02
60.953	cis-alpha-Bisabolol	0.02
61.076	trans-alpha-Bisabolol	0.03
		100.00